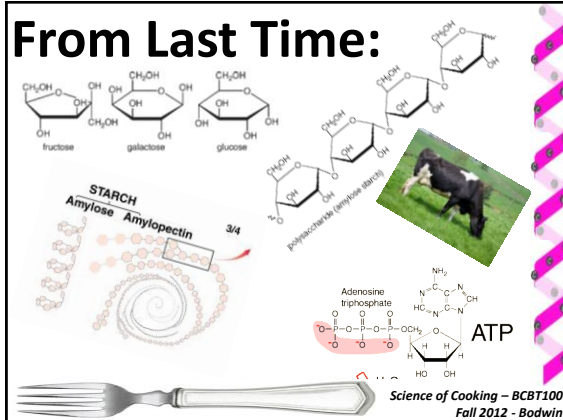


From Last Time:



Milk

- **WHAT IS MILK?** U.S. Code of Federal Regulations, Title 21, Vol. 8, Chpt 1, Pt 1240, subpart A, Section 1240.3(j), Release 13
- “the lacteal secretion obtained from one or more healthy milk-producing animals, e.g. cows, goats, sheep, and water buffalo, including, but not limited to, the following: lowfat milk, skim milk, cream, half and half, dry milk, nonfat dry milk, dry cream, condensed or concentrated milk products, cultured or acidified milk or milk products...”



Milk

Protein-rich water with an emulsion of protein-coated fat globules

Water phase (aqueous):

Slightly acidic water (pH ~6.6)

Protein bundles

Lactose

Fat phase:

Droplets of oil with a protein shell



Mixtures

Homogeneous

Pure substances

Solutions

Heterogeneous

Bulk mixtures, melange

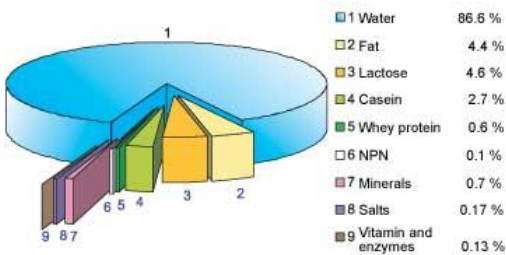
Suspension/colloid, emulsion

Emulsifiers and amphiphiles



Science of Cooking – BCBT100
Fall 2012 - Bodwin

Milk Composition



Science of Cooking – BCBT100
Fall 2012 - Bodwin

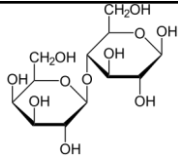
Sources of milk:

Species	Water	Fat	Casein	Whey	Lactose
Human	87.1	4.6	0.4	0.7	6.8
Cow	87.3	4.4	2.8	0.6	4.6
Buffalo	82.2	7.8	3.2	0.6	4.9
Goat	86.7	4.5	2.6	0.6	4.4
Sheep	82.0	7.6	3.9	0.7	4.8
Horse	88.8	1.6	1.3	1.2	6.2
Rat	79.0	10.3	6.4	2.0	2.6
Ass	88.3	1.5	1.0	1.0	7.4
Reindeer	66.7	18.0	8.6	1.5	2.8
Camel	86.5	4.0	2.7	0.9	5.4



Science of Cooking – BCBT100
Fall 2012 - Bodwin

Lactose



- Disaccharide - glucose and galactose prepared as separate molecules and condensed into "milk sugar" through the secretory cells
- Ability to digest (metabolize or "break down") lactose requires a special enzyme – lactase
- Lactase is produced in gut by children but levels decrease in adults.
- Northern Europeans maintain levels but only 30% of others can produce significant quantities



Science of Cooking – BCBT100
Fall 2012 - Bodwin

Lactose Intolerance

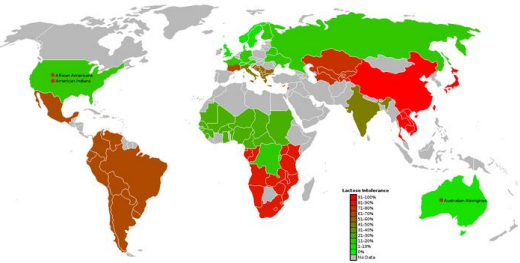


Image: <http://www.oliverbenjamin.net/dudespaper/wp-content/uploads/2009/06/lactose-intolerance-map.jpg>



Science of Cooking – BCBT100
Fall 2012 - Bodwin

Lactose Intolerance

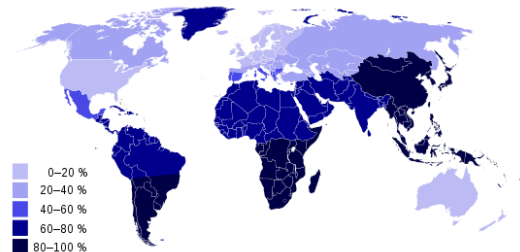
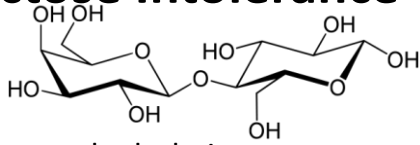


Image: <http://supervegan.com/blog/entry.php?id=1638>



Science of Cooking – BCBT100
Fall 2012 - Bodwin

Lactose Intolerance



Lactase – hydrolytic enzyme

Lactose passes through to gut

Draws water in (osmosis)

Bacterial digestion – $CH_4(g)$, $CO_2(g)$

Cramps, gas, diarrhea

Image: <http://en.wikipedia.org/wiki/File:Beta-D-Lactose.svg>



Science of Cooking – BCBT100
Fall 2012 – Bodwin

Purpose of Lactose

Glucose

Protected as disaccharide

Energy source

Galactose

Neural tissue

Make brains...

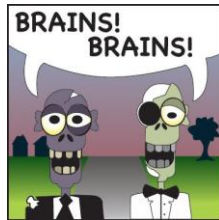


Image: http://biology-blah-blah-blog.blogspot.com/2012_01_01_archive.html



Science of Cooking – BCBT100
Fall 2012 – Bodwin

Milk Protein - Casein

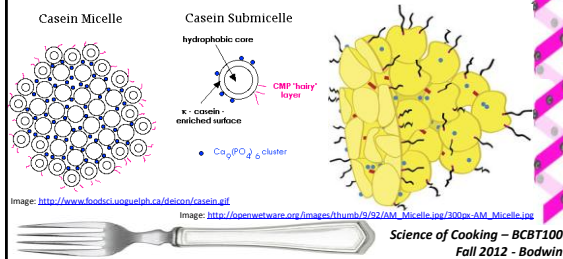
- Major single protein produced in most milk
- Key characteristics of casein
 - Heat stable – well folded protein
 - “floats” in micelle form (globs of protein arranged to keep the protein in solution)
 - Hydrophobic portion of protein in mi
 - Calcium binds tightly to this protein – helps to carry calcium into the blood system!
 - Four main forms of Casein – one “caps” micelles limiting the size
 - At acid levels above 4.5, proteins are neg charged and repel.
 - When acid increases to pH lower than 4, proteins denature and are not charged – thus they bind to each other and “curdle”
 - Body builders sometimes use this as a “slow-digesting protein” (why)



Science of Cooking – BCBT100
Fall 2012 – Bodwin

Casein Micelles

kappa-Casein coating
Calcium-binding



Milk Protein - Whey

- Soluble in acidic aqueous phase
- Many whey proteins are immunoglobins (antibodies for the young animal)
- Lactoglobulin has several sulfur atoms – provides flavor and odor to cooked milk
- Proteins in whey are used for animals as source of nutrition
- Under more extreme conditions than casein, whey proteins can form small clots – ricotta cheese
- These proteins help make ice cream... creamy